

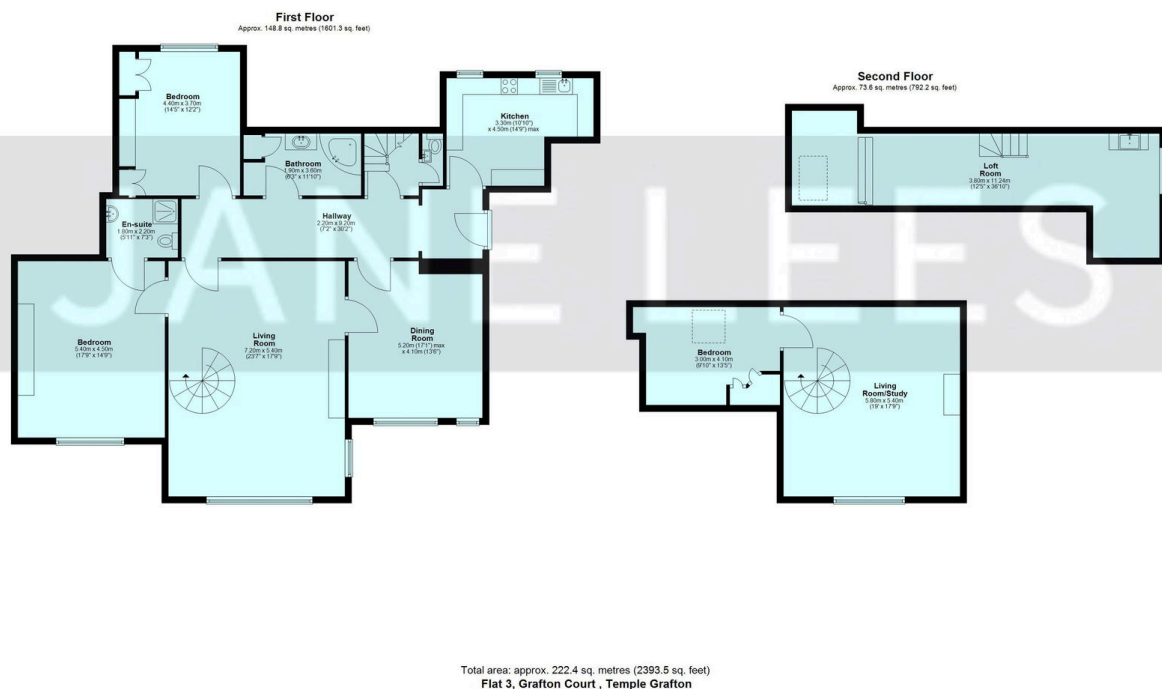
Apartment 3, Grafton Court, Temple Grafton

£500,000

🛏 3 🚿 2 🚻 3



- Property Ref
- Refurbishment Opportunity
- Magnificent Victorian Country Mansion
- Uninterrupted Views
- Beautiful Grounds of Some Three Acres.
- No Chain
- 2393 sq ft Floor Plan
- Rare to the Market
- Double Garage and Parking
- Idyllic Location



Beautiful, first and second floor, period country mansion house apartment presenting a new owner the unique opportunity to re-deign and re-furbish a magnificent floor space of 2393 sq ft. Set in three acres of grounds, double garage and parking.